

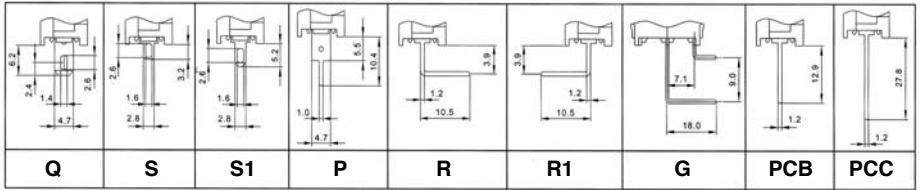
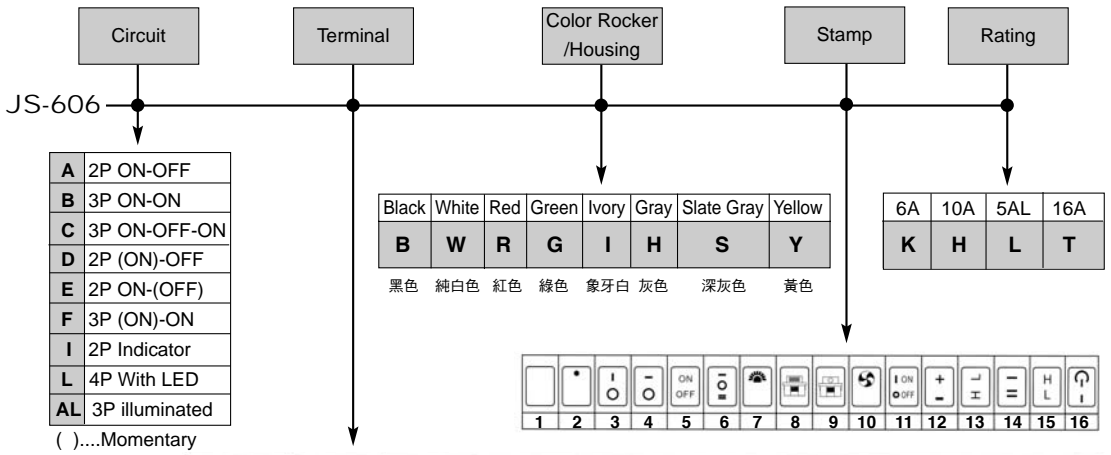
## (S.P. Mini Rocker Switch) JS-606 series

### Specifications

Rating	K:6A 125VAC/3A 250VAC (UL CSA) H:10A 125VAC/6A 250VAC (UL~KEMA) L:5A 125L (Inrush Current 80A) T:16A 125VAC/10A 250VAC T105
Contact Resistance	20mΩ (max.)
Insulation Resistance	DC 500V 100MΩ (min.)
Dielectric Strength	1500VAC/1 Minute
Safety Approval	



### How to order

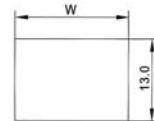


JS-606C-Q-B/B-6-□

JS-606B-R-B/B-1-□

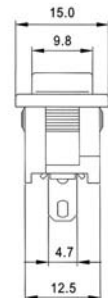
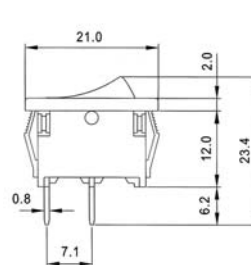


W	Panel Thickness
19.2	0.75-1.25
19.4	1.25-2.0
19.8	2.0-3.0



JS-606A-G-B/B-3-□

JS-606I-Q-G/B-1-□



# ROCKER SWITCHES

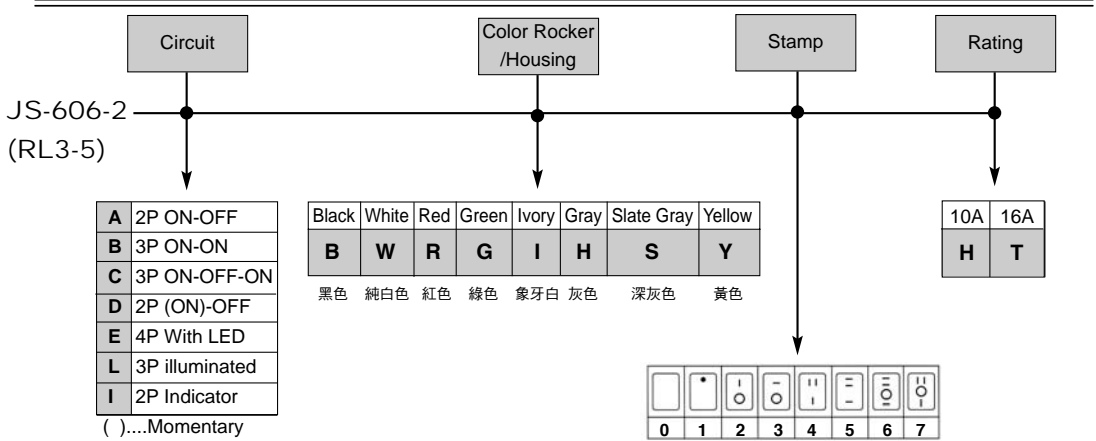
## JS-606-2 series (RL3-5) (Round Shape Rocker Switch)

### Specifications

Rating	H:10A 125VAC/6A 250VAC 6(2)A 250VAC T125 T:16A 125VAC/10A 250VAC 1/3HP 125~250VAC T105
Contact Resistance	20mΩ (max.)
Insulation Resistance	DC 500V 100MΩ (min.)
Dielectric Strength	1500VAC/1 Minute
Safety Approval	

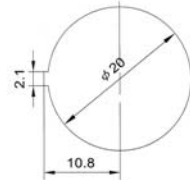


### How to order



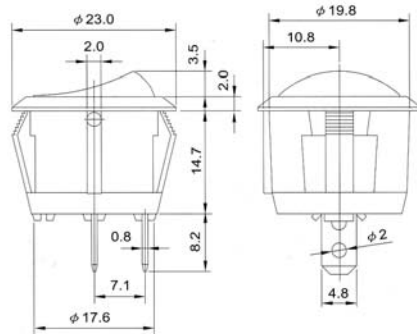
JS-606-2A-B/B-2-T

JS-606-2E-B/B-O-H



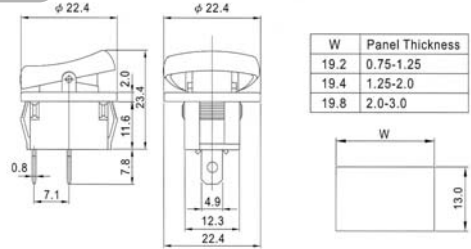
JS-606-2C-B/B-6-H

JS-606-2L-R/W-2-H

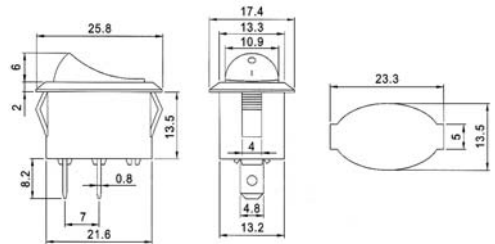


# JS-606 series

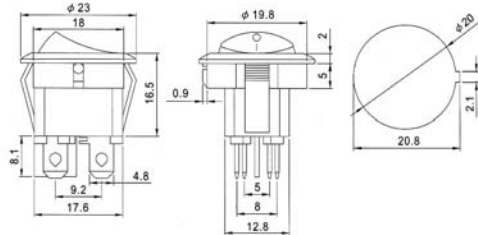
JS-606-1A:ON-OFF JS-606-1B:ON-ON JS-606-1C:ON-OFF-ON



JS-606-3A:ON-OFF JS-606-3B:ON-ON JS-606-3C:ON-OFF-ON JS-606-3L:ON-OFF(illuminated)

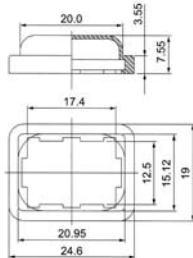


JS-606-4A:ON-OFF JS-606-4B:ON-OFF(3P illuminated) JS-606-4C:ON-OFF-OFF(4P illuminated)

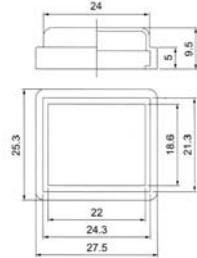


## Accessory

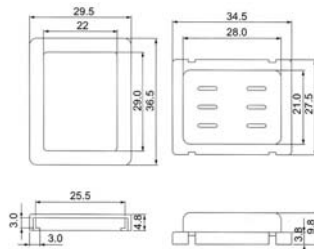
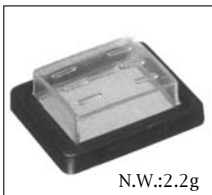
A-001 (JS-606 Cap)



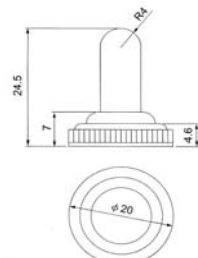
A-002 (JS-606 Cap)



A-003 (JS-608 Cap)



A-004 (Toggle S.W.Cap)



# ROCKER SWITCHES

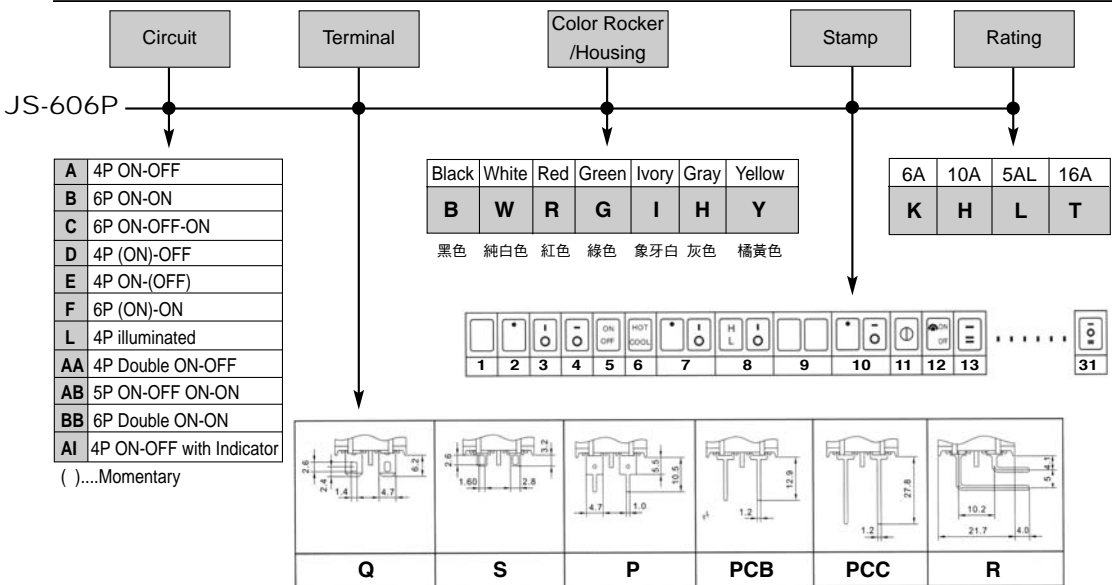
## JS-606P series (D.P. Rocker Switch)

### Specifications

Rating	K:6A 125VAC/3A 250VAC (UL CSA) H:10A 125VAC/6A 250VAC (UL~KEMA) L:5A 125L (Inrush Current 80A) T:16A 125VAC/10A 250VAC T105
Contact Resistance	20mΩ (max.)
Insulation Resistance	DC 500V 100MΩ (min.)
Dielectric Strength	1500VAC/1 Minute
Safety Approval	



### How to order



JS-606PA-R-B/B-4-□

JS-606PAA-Q-BB/B-9-□

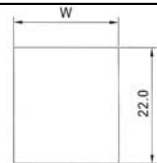


N.W.:6g



N.W.:6g

W	Panel Thickness
19.2	0.75-1.25
19.4	1.25-2.0
19.8	2.0-3.0



JS-606PC-Q-B/B-31-□

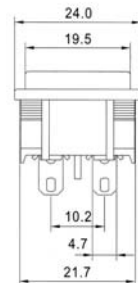
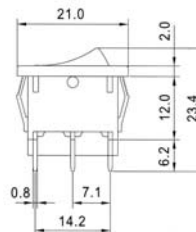
JS-606PAI-Q-BR/B-28-□



N.W.:7g



N.W.:6g



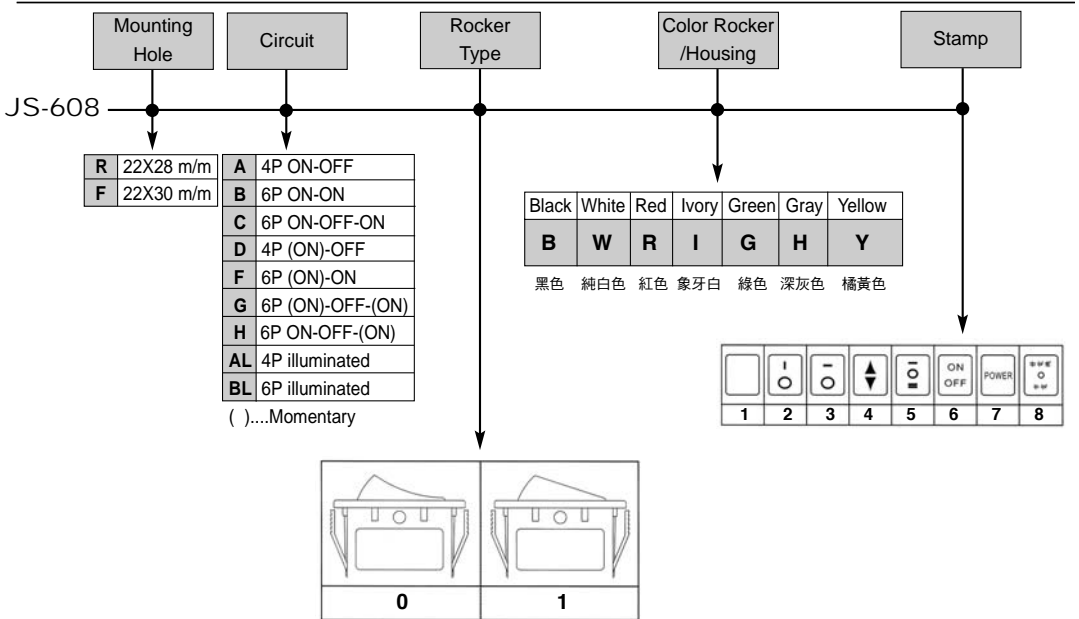
# (D.P. Rocker Switch) JS-608 series

## Specifications

Rating	10A 125VAC / 250VAC
	16A 250VAC
Contact Resistance	20mΩ (max.)
Insulation Resistance	DC 500V 100MΩ (min.)
Dielectric Strength	1500VAC/1 Minute



## How to order



### JS-608FC-O-R/B-5

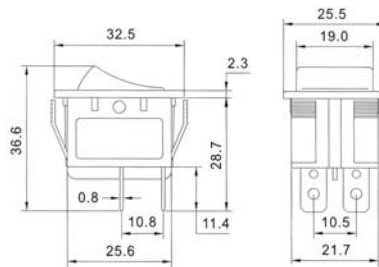


N.W.:13g

### JS-608RB-O-R/B-4



N.W.:14g



### JS-608RAL-O-G/W-2



N.W.:13g

### JS-608FAL-1-Y/W-2



N.W.:14g

R	W	Panel Thickness	F	W	Panel Thickness
	28.0	0.75-1.25		30.0	0.75-1.25
	28.2	1.25-2.0		30.2	1.25-2.0
	28.5	2.0-3.0		30.5	2.0-3.0

Panel Height: 22.0, Panel Width: w

# ROCKER SWITCHES

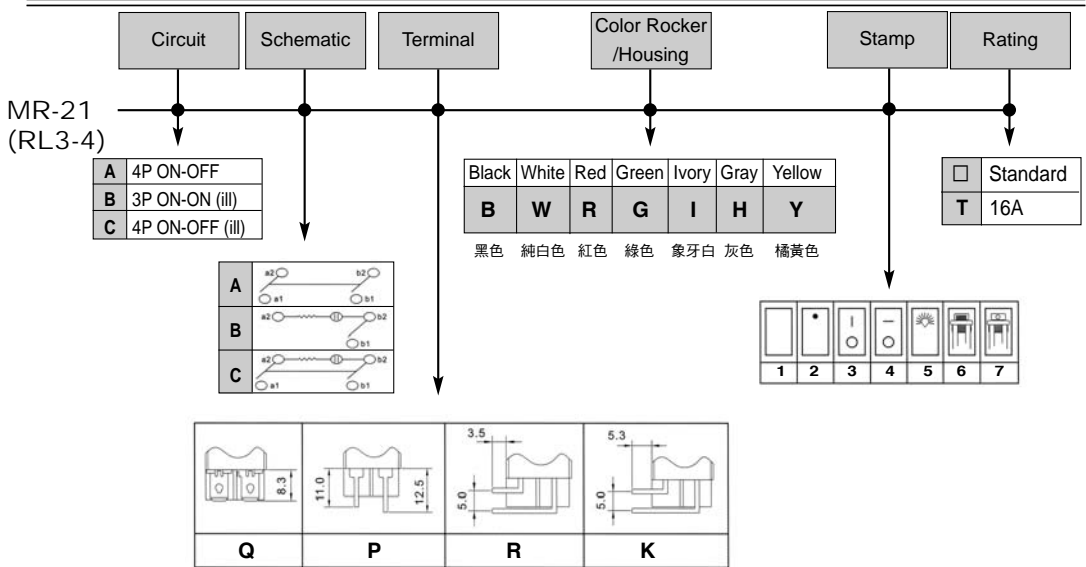
## MR-21(RL3-4) series

### Specifications

Rating	□:10A 125VAC/6A 250VAC T85 T:16A 125VAC/10A 250VAC 1/3 HP 125~250VAC T105
Contact Resistance	20mΩ (max.)
Insulation Resistance	DC 500V 100MΩ (min.)
Dielectric Strength	1500VAC/1 Minute
Safety Approval	



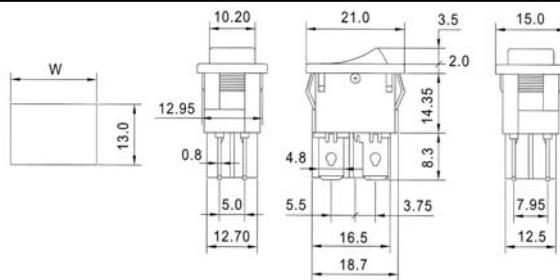
### How to order



### MR-21A-Q-B/B-3



N.W.:5g



W	Panel Thickness
19.2	0.75-1.25
19.4	1.25-2.0
19.8	2.0-3.0

### MR-21C-Q-R/B-1



N.W.:5g

### MR-21C-Q-G/W-1



N.W.:5g

### MR-21A-Q-H/H-3



N.W.:5g



### MR-21A-R-B/B-3



N.W.:5g

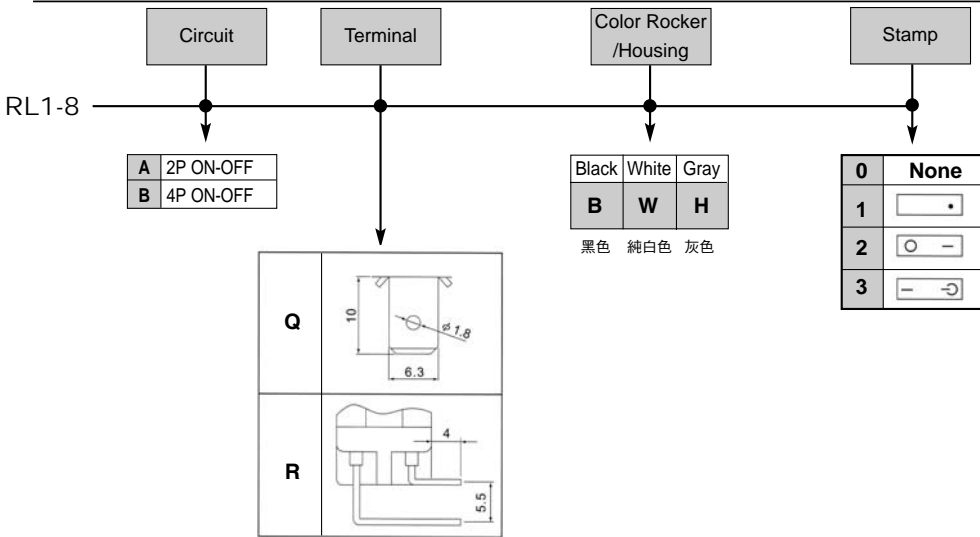
# RL1-8 series

## Specifications

Rating	10(4)A 250VAC T85 
	16(4)A 250VAC T125
	15A 125V/7.5A 250VAC 
Contact Resistance	20mΩ (max.)
Insulation Resistance	DC 500V 100MΩ (min.)
Dielectric Strength	1500VAC/1 Minute

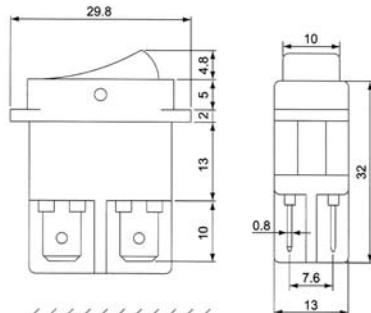


## How to order



RL1-8-A-Q-B/B-2

RL1-8-B-Q-B/B-2



RL1-8-B-Q-B/B-0

RL1-8-B-R-B/B-2

